

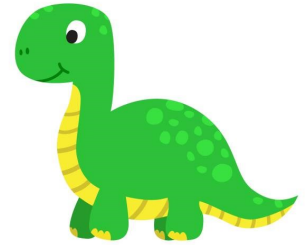
**Terms : 3 (January-February)**

**Teacher : Mrs Bardoli**

**Topic Title : 'Dinosaur Planet'**

**Year Group : R**

**TA : Miss Cookman**



**What will your child be learning this term?**

### Thinking Academically

#### Communication and language

- To use talk to organise, sequence and clarify ideas.
- To speak in full sentences.
- Learn and use a range of new topic related words.
- Think about what they are going to say before saying it.
- Listening to others and responding to questions.

### Thinking Academically

#### Mathematical development

##### Number:

- Representing and comparing 0-8
- Composition of 0-8
- Number bonds
- Part/whole
- Addition
- Subitising to 8
- Doubles

##### Shape, space and measures:

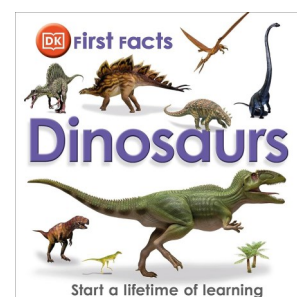
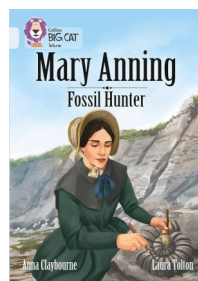
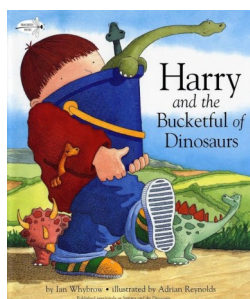
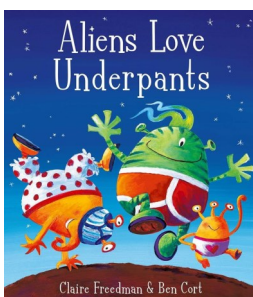
- 2D shapes
- Measuring

### Thinking Academically

#### Reading and writing

- To segment and write key words independently.
- To write a simple caption (I can hop. I am a cat. Pat the dog).
- To blend and read simple words and captions/ sentences.
- To revisit Phase 2 phonics (s, a, t, p, i, n, e, r, h, m, d, g, o, u, c, k, ck, b, f, l, ll, ss, ff, j, v, z, zz, w, x, y, qu, ch, sh, th, ng)
- To continue with Phase 3 phonics (ar, ure, er, or, air, ai, ee, igh, oa, ue, ur, oi, oo, ow, ear)

### This term's stories/ books include



## Thinking Globally

### Understanding the World

- Forest School– changes
- Identify the different seasons and weather.
- Celebrating with family
- Using technology
- Ask how and why questions.
- Luna New Year

## Thinking Globally

### BSL

#### Topic words:

- Dinosaur
- Fossil
- Old
- Extinct
- Pre-historic

## Thinking Healthily

### Personal, social and emotional development

- Confident to try new activities.
- Understand consequences of their behaviour.
- Talk about special times and events.
- Enjoy taking responsibilities.
- Negotiating problems without aggression or getting upset.

## Thinking Artistically

### Expressive art and design

- Introduce a story line or narrative into play.
- Play alongside others that are engaged in the same activity.
- Construct with a purpose in mind.
- Create representations of events, people and objects.

## PLEASE REMEMBER

- Reading records to be filled in **AT LEAST 3** times a week.
- Reading books and reading records to be in school **EVERY MONDAY**
- Contact Book to be in school **EVERY DAY.**
- Your child's water bottle **EVERY DAY.**
- Wellies to be in a named plastic bag on Forest School Day, please wear school shoes or trainers to school.
- **NAMED** PE Kit to be brought into school for the start of term 3 and left in the classroom.
- All items of clothing to be clearly named.

## Thinking Healthily

### Physical development

- Experiment with ways of moving and jumps off things successfully.
- Understand what being healthy is.
- Parachute and Ribbons.

